

Version 5 Software Update

Visual C||Cure

Visual Studio 2026

The entire code base is now compiled using Visual Studio 2026, ensuring up-to-date compilers and debugging tools are being used to help reduce bugs.



Native Unicode support

Previous versions of Visual C||Cure have been written using a custom implementation of Unicode support. The code base has now been updated to use native Unicode data types whilst still maintaining UTF8 support as used on the target devices.



Better support for multiple monitors

Multiple monitor development setups are now more common than ever. Due to this, better support has been added to maintain dialog and window positions across any connected monitor.

Enhanced language support

Language support has been greatly enhanced to allow the user to fully translate all aspects of the application when viewed via the internal website.

Previously, only database pins supported alternative Unicode language translation strings. Language support has been extended to include Display Menus (as used on, for example, the internal website) and Tables (which previously only supported a single “alias” alternative).

The Table manager has been rewritten to allow each table entry to have its own translation per configured language.

| Value | Text | Alias |
|-------|------|-------|
| 0 | NO | No |
| 1 | YES | Yes |

Old Table Manager

| Entry | Name | English | Français | Deutsch | Español |
|-------|------|---------|----------|---------|---------|
| 0 | NO | No | Non | Nein | No |
| 1 | YES | Yes | Oui | Ja | Sí |

New Table Manager



Furthermore an additional table, called SYSLANG, has also been added which contains over 400 entries for all the system strings used on the target website. See the website section below for an example.

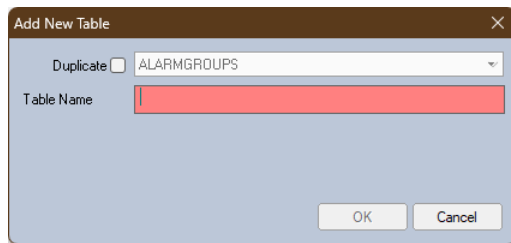
New predefined units table

In order to standardize across library blocks, new applications will now have an extensive UNITS table containing a predefined set of units, split into groups such as distance, time, weight and volume.

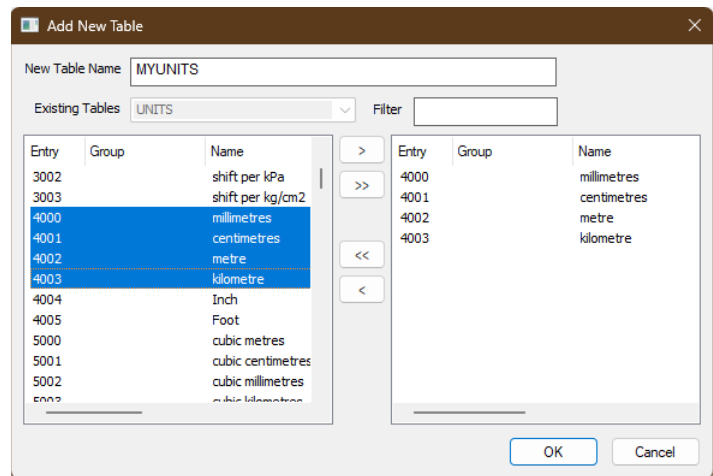
| | | | | | | |
|--------------|--|--|--|--|--|--|
| SYSINFO | | | | | | |
| SYSINFO2 | | | | | | |
| SYSLANG | | | | | | |
| UNITS | | | | | | |
| USERS | | | | | | |
| ZONES | | | | | | |

| Entry | Name | English | Français | Deutsch | Español |
|-------|------------------|-----------------|----------|---------|---------|
| 6003 | cubic kilometres | km ³ | | | |
| 6004 | litres | l | | | |
| 6005 | fl oz (US) | fl oz | | | |
| 6006 | Cubic Inch | in ³ | | | |
| 6007 | Cubic Foot | CF | | | |

If a custom set or a subset of units is required, the “Add New Table” dialog has been redesigned to allow existing table entries to be copied selectively into the new table.



Old Dialog



New Dialog

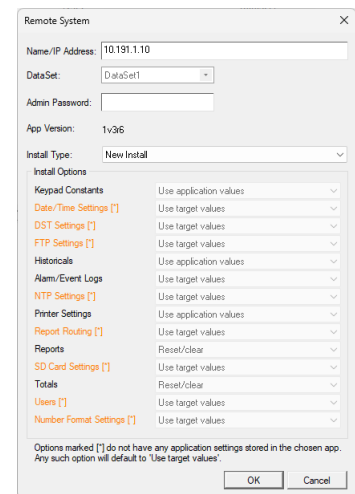
NANOConf

Granular install options

When installing an application onto a target device, the user now has greater control over what settings and features should (or shouldn't) be updated.

The user can now choose between the following Install Types:

- New Install** Any settings contained within the application file are used.
- Upgrade** The target device retains its existing settings.
- Custom** For each setting, the user can choose to keep the existing setting, use the new application setting or reset to factory default.



Note that to retain backward compatibility, if the target unit is still running v4 of the firmware, all options are preset so it emulates the previous method of installation.

Synchronized column widths

As a simple quality-of-life enhancement, the column widths of the “stored” and “local” device lists are now synchronized.

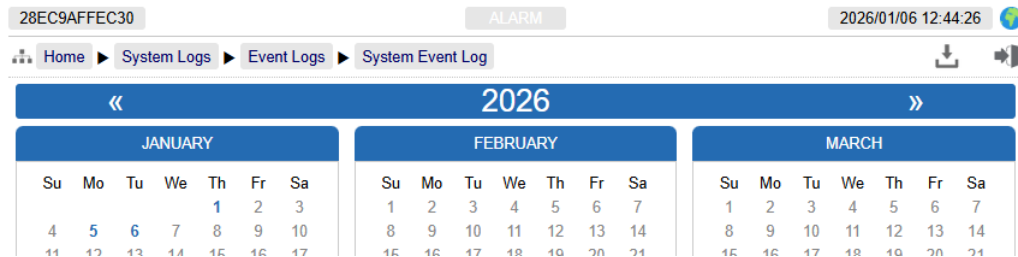
Column widths are also now saved on close and restored on startup.

NANO Target Firmware

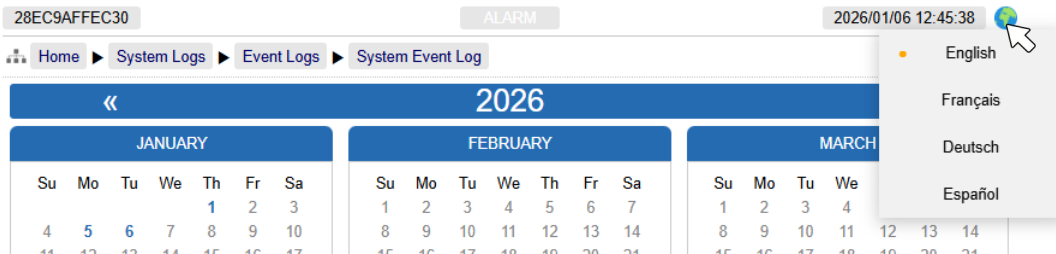
Dynamic language support

To complement the additional language support as mentioned in the Visual C||Cure section above, the website has been updated to allow the same enhanced language support.

When multiple languages are defined in an application, a new language icon is displayed in the top right corner of the website.



Hovering over this brings up a list of available languages.



Selecting one of the languages causes the website to dynamically refresh any pin names, table entries and system text using any available translation strings.



Support Tunneling

A new “support tunneling” feature has been added which can be enabled to allow the factory to provide remote support. Although disabled by default, when enabled (via the internal website) it turns on a “contact the factory” message every 10 minutes. The factory is then able to connect remotely in order to backup and install updates to the unit.

The advantage of this feature is that, since the remote device is instigating the connection, it allows support without the need to modify the user’s firewall to enable remote access.

Configurable DNS entries

Full control over the DNS table for the primary network port has been added to the Network page on the internal website.

If in DHCP mode, the current DNS entries are displayed (read-only).

If in Static mode, two DNS entries can be manually configured to suit the user’s network requirements.