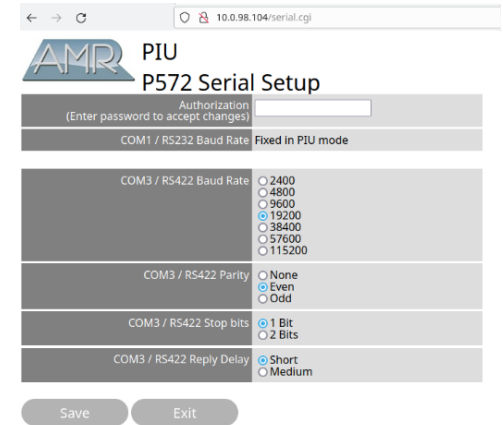
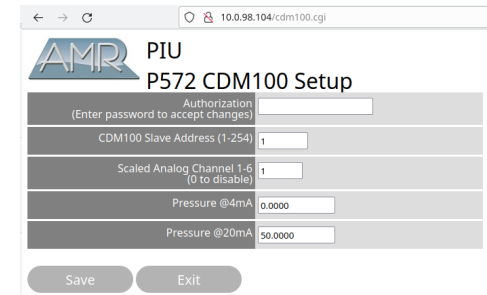


COM3 is used for the Modbus Master, configure the RMU serial port to match the Densitomer serial Port using the Serial setup web page, shown below:



NOTE:

To access the Pressure correction setup page, add: /cdm100.cgi after the IP address in the browser, as shown below.



This drawing may not be reproduced without the consent of Newflow Ltd
© Newflow Ltd 2023



4					
3					
2					
1					
0	13 March 23	MOB	DGS		Initial Release
Rev	Date	Drawn	Chk'd	App'd	Description

Title: **RMU providing pressure information to Densitometer.**

Drq No. P572 ps1

Sheet 1 of 1